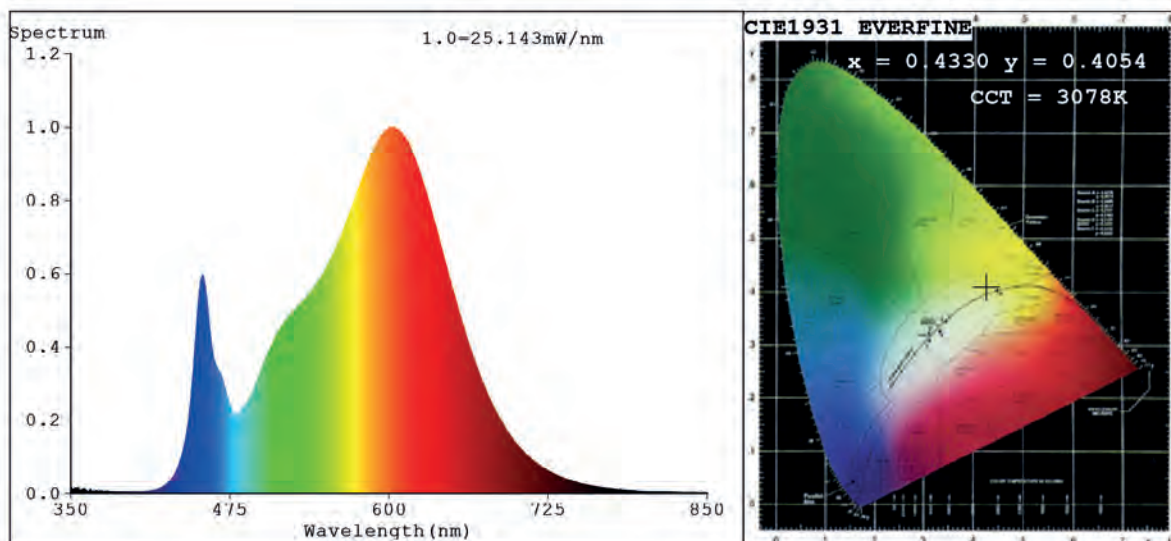


Spectrum Test Report



Color Parameters:

Chromaticity Coordinate: $x=0.4330$ $y=0.4054$ $u'=0.2475$ $v'=0.5213$
 CCT=3078K (Duv=0.0011) Dominant WL:Ld =582.1nm Purity=51.7%
 Ratio:R=22.5% G=74.7% B=2.8%; Peak WL:Lp=600.5nm FWHM=129.6nm
 Render Index:Ra=82.9 CRI=77.4 TM30:Rf=82 Rg=94
 R1 =82 R2 =92 R3 =96 R4 =81 R5 =82 R6 =91 R7 =82
 R8 =59 R9 =6 R10=82 R11=80 R12=70 R13=84 R14=98 R15=73

Photo Parameters:

Flux = 1237 lm Eff. : 116.65 lm/W Fe = 3.723 W

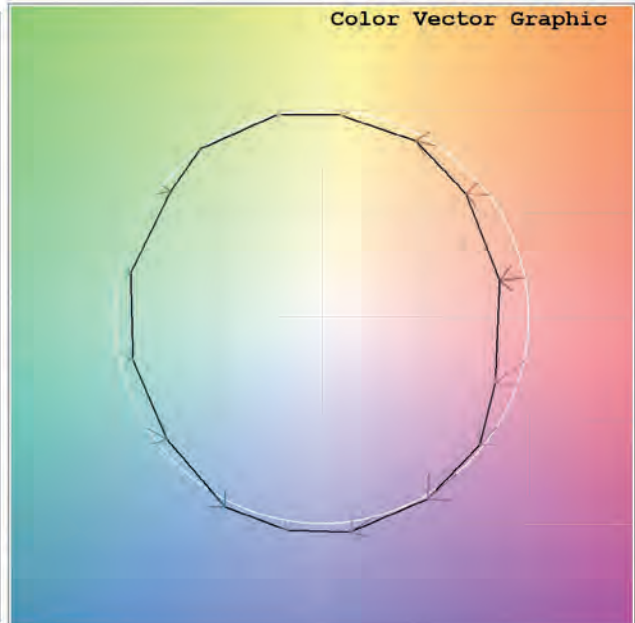
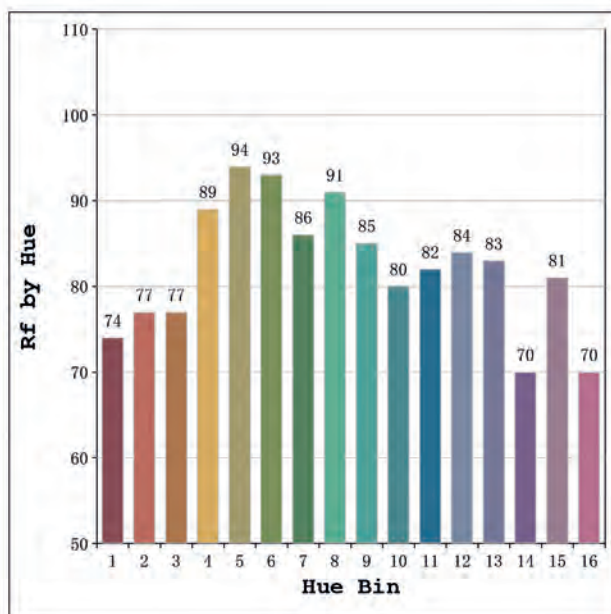
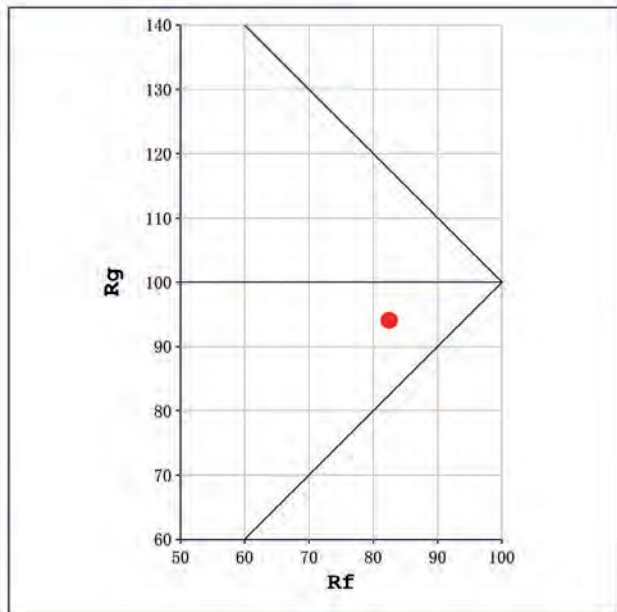
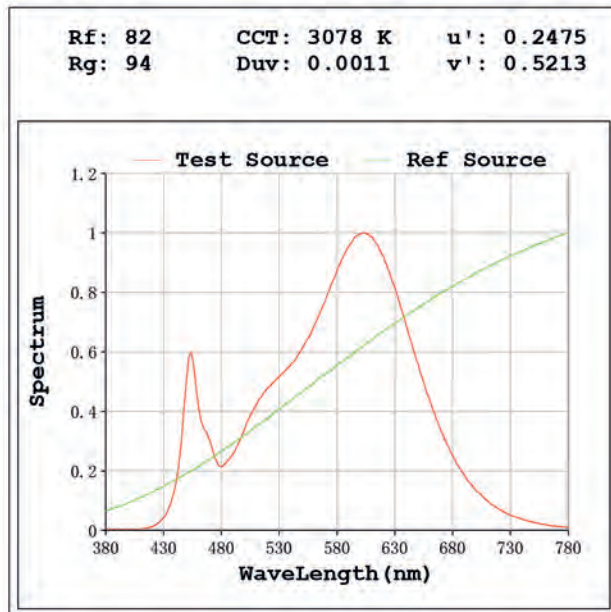
Electrical parameters:

V = 23.998 V I = 0.4419 A P = 10.60 W PF = 1.000

Status: Integral T = 989 ms Ip = 49758 (76%)

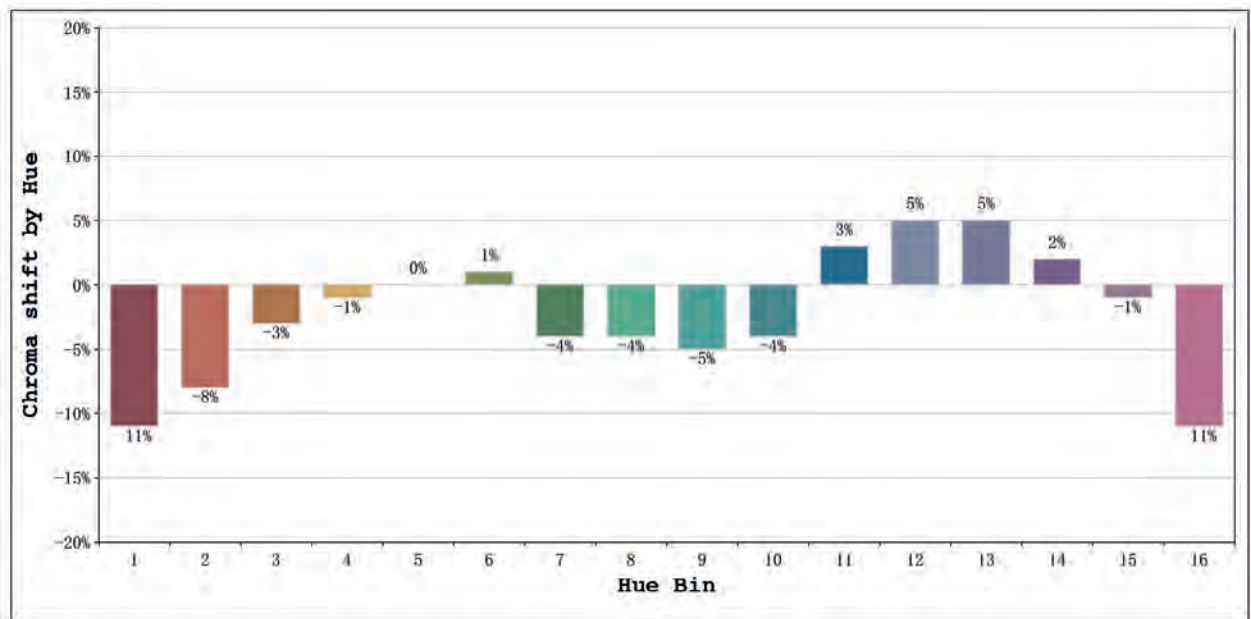
Model:Ávila free cut 3000K
 Tester:Sergio Carneros
 Temperature:20Deg
 Manufacturer:Luz Negra

Number: 33.219
 Date:2025-06-03 11:50:13
 Humidity:50%
 Remarks:100cm de tira flexible



Model:Ávila free cut 3000K
 Tester:Sergio Carneros
 Temperature:20Deg
 Manufacturer:Luz Negra

Number: 33.219
 Date:2025-06-03 11:50:13
 Humidity:50%
 Remarks:100cm de tira flexible



			Graphic shift(%)	
Hue Bin	Hue Angle	Rf	Chroma	Hue
1	0.0° - 22.5°	74	-11	1
2	22.5° - 45.0°	77	-8	7
3	45.0° - 67.5°	77	-3	10
4	67.5° - 90.0°	89	-1	4
5	90.0° - 112.5°	94	0	3
6	112.5° - 135.0°	93	1	0
7	135.0° - 157.5°	86	-4	-4
8	157.5° - 180.0°	91	-4	0
9	180.0° - 202.5°	85	-5	5
10	202.5° - 225.0°	80	-4	10
11	225.0° - 247.5°	82	3	11
12	247.5° - 270.0°	84	5	3
13	270.0° - 292.5°	83	5	-12
14	292.5° - 315.0°	70	2	-17
15	315.0° - 337.5°	81	-1	-11
16	337.5° - 360.0°	70	-11	-12

Model:Ávila free cut 3000K
Tester:Sergio Carneros
Temperature:20Deg
Manufacturer:Luz Negra

Number: 33.219
Date:2025-06-03 11:50:13
Humidity:50%
Remarks:100cm de tira flexible